

INSURANCE AND REAL ESTATE Fred C. Roberts & Son	ABOUT OUR FOOD AND SERVICE <p>Mr. and Mrs. Albert Macauley, who have taken over our catering are doing an excellent job.</p> <p>The pleasant service, food and atmosphere are the result of their hard work and good management.</p>		FASHION SHOP Women's Apparel 'Always Something New' Phone 2130
Wholesale Distributors COHEN BROS., Inc.	Compliments of Marble Savings Bank Member of FDIC	COMPLIMENTS OF A FRIEND	VARSIITY CLOTHING BOYS' AND MEN'S APPAREL
Stephen C. Dorsey Agency Stephen C. Dorsey— Robert H. Kinney GENERAL INSURANCE REAL ESTATE 98 Merchants Row, Phone 145			Compliments of Maurice C. Eaton Eaton's Esso Station No. Main St. Tel. 1591
RUTLAND SAVINGS BANK RUTLAND, VT. Member of FDIC	CENTRAL VERMONT <i>Public Service</i> CORPORATION		

Exhibition Match

GENE SARAZEN

Gene Sarazen
Autograph

PATTY BERG

Patty Berg
Autograph

TOM PIERCE

Tom Pierce
Autograph

MAE MURRAY

Mae Murray
Autograph

RUTLAND COUNTRY CLUB

Wednesday, August 24, 1949

About Our Jimmy . . .

Jim Murray, our nationally-known teaching Pro has been with us since 1928. Jim was born in Carnoustie, Scotland. As a result, it was almost inevitable that Jim follow his chosen profession.

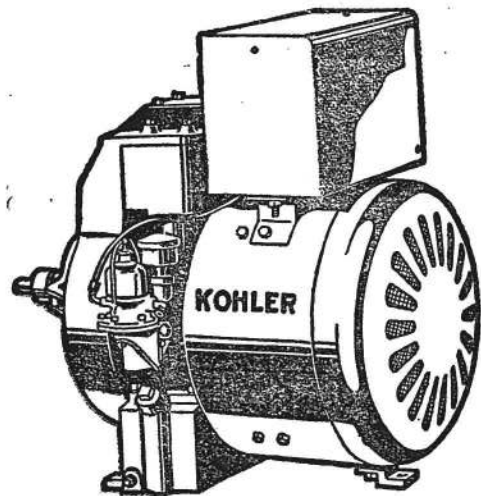
After serving 5 years of service in World War I, Jim came to this country. Jim was engaged with the Pittston, Pa., the Penyan, N. Y., and Wolferts Roost Country Clubs before coming to Rutland.

Through the efforts of our late and beloved "Les" Pierce, and others, our association with Jim started 22 years ago. The many fine golfers in our Club are a living attestation to Jim and his teaching ability.

W. E. GRACE CO.
Furriers

PHONE 96

CANNEY-PLUE, INC.
Distributors



74 River St.

Rutland, Vt.

ABOUT OUR CLUB

Originally established in 1901, the club took over its present site in 1904. In 1927 nine holes were added to make our present course.

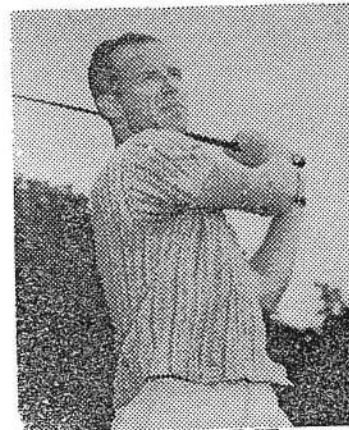
Guided through the years by many and various individuals too numerous to mention but all greatly interested in our development, the course has become one of the leading ones in New England.

Besides providing sport and recreation for hundreds of golfers we have produced our share of champions. Former men and women state titleholders who have sharpened their games on our fairways include Bud Russell, Bill Pond, George Morse, Mrs. Virginia Pierce Smith and Mrs. Ruth Raymond Jones.

The Officers and Members take great pleasure in being able to welcome to our club two such famous figures of the game as Patty Berg and Gene Sarazen for another outstanding event in the history of our club.



MAE MURRAY.



TOM PIERCE.

About Our Mae . . .

Miss Murray started playing golf at the age of eight. At thirteen, she played her first nine holes of golf in 53 strokes. May won the Vermont State Women's Amateur in 1941 at the age of fifteen. She recently won the state championship at Barre, Vt., to remain undefeated in Vermont golf since her first title. Other successes include: Runner up in The Easter Championship 1947, winner of The North Eastern New York Ladies' Championship in 1946, 1947 and 1949. She holds course records for women at the following clubs: Rutland 71, Barre 9 holes 31, Longmeadow Country Club, Springfield, Mass., 69, and Schuyler Meadows in Albany 74.

About Our Tom . . .

Thirty-year-old Tom Pierce is the star golfer of a golfing family. Raised in the atmosphere of the game by his father, the late Leslie D. Pierce, long-time President of the Vermont State Golf Association and a very fine player himself, Tom showed signs of ability at an early age. His first notable victory came at sixteen when he captured his first of six Vermont Championships. That same year his sister, Virginia, won the women's title to create a monopoly unique in the history of the sport.

Other of Tom's successes include the winning of the Eastern Interscholastic, runner-up by a one-hole margin to Ray Billows in the N. Y. State Amateur and many victories in invitation and cup tournaments.

He is holder of the Rutland course record, set with a seven-under-par 63.

Next week Tom goes to Rochester, N. Y., for another try at the U. S. Amateur Title.

WILSON CLOTHING CO.

"LUGGAGE AND SHOES, TOO"

ABEL'S, INC.
LINCOLN & MERCURY
SALES & SERVICE
 Phone 2700

PERRY E. BOVE EST.
 Wholesale Distributors

	1	2	3	4	5	6	7	8	9	Out
PAR	4	4	3	5	3	4	4	4	4	35
Gene Sarazen	4	4	2	5	3	4	4	4	3	33
Patty Berg	4	5	3	5	5	5	4	5	4	40
Tom Pierce	3	4	3	6	5	4	5	4	4	38
Mae Murray	5	4	5	5	5	5	4	6	4	42

The
Rutland County National Bank
 Strong Enough to Protect You
 Large Enough to Serve You
 Small Enough to Know You
 Member of FDIC

VALPRED A MOTOR CO.
 — OLDSMOBILE —
SALES & SERVICE
 Phone 3233

Wilson Sports Equipment Co.
"WHERE SPORTSMEN MEET"

	10	11	12	13	14	15	16	17	18	In	Total
	4	4	3	5	4	3	4	4	4	35	70
Sarazen	4	4	3	5	3	2	4	4	4	33	66
Berg	4	4	3	5	4	3	4	4	5	36	76
Pierce	3	4	3	5	4	4	4	5	4	36	71
Murray	4	4	4	6	x	3	5	4	5	35	71

F. B. HOWARD CO.
 Jewelers & Silversmiths
 7 Center St.
 Rutland, Vt.

CHEVROLET
SALES & SERVICE
 Phone 580
SAM STOWELL, PROP.



GENE SARAZEN.

The Squire From Germantown

Has been one of the most prominent and colorful personalities in golf since 1921, when he captured his first P.G.A. title and the National Open. Through the years the many thrilling matches in which he has figured have become legendary. He has won virtually every important professional championship, including the British Open in 1932, when he established a record score of 283. As late as 1947 he defeated Sam Snead in Detroit in a P.G.A. championship round.



FIVE STAR SERVICE

Completely Equipped and Staffed in Every
Department to Take Care of Your Needs,
Large or Small

Front End Alignment Sheet Metal and Duco
Transmission and Differential
Motor Tune Up Lubrication

RUTLAND BUICK CO., INC.

Phone 2106 Sales and Service 92 West St.

RED'S TAXI SERVICE

PHONE **33**

24-Hour Service

F. W. Burke, Prop.



PATTY BERG.

Patty Berg

Patty started playing golf in 1933 when her father decided she should give up football. Her career has been starred with one championship after another. In 1938 she was voted by sports writers as the outstanding woman athlete.

Some of her outstanding accomplishments are:

Women's National Amateur Championship in 1938, All-American Open, Chicago in 1943. In 1948, Patty was runner-up in the All-American Championship and won the Women's Western Open and the Hardscrabble Open.

She started the 1949 season by winning the Tampa Open.

Patty is destined to go on winning many more tournaments.

Good luck, Patty—

RAY BEANE, INC.

**IN GOLF OR LIFE
SHOOT FOR PAR
AND SAVE AT THE**

RUTLAND TRUST COMPANY
"UNDER THE CLOCK"

Member Federal Deposit Insurance Corporation